

SHOWCASING THE MAGIC OF THE PALIA GAME COMMUNITY

A fanmade mini magazine | Spring 2024 | Issue #1

THE PRANCING SERNUK



CREATIVE CORNER

Fanart, cosplay and other creations

LUNASCOPE

Seek out your destiny

COMMUNITY PROJECTS

Check out what the players have been up to

**AND
MORE!**



CONTENTS

- Issue 01 - Spring 2024 -



01
Contents

02
Mini comic

03
Editorial message

04
In-game stories

14
Top 3

16
Creative Corner

22
Lunscope

24
Villager ads

26
Community projects

30
Get to know the CM's

34
Puzzles

40
Credits



To our fresh Palian sprouts: There might be spoilers ahead!



Editorial message

Welcome, fellow Palians! It gives me so much joy to be able to share with you our very own Palia Community Magazine: The Prancing Sernuk!

It's been a good while since the public took their first steps into Kilima Village. We've seen Palia released on Epic games, Nintendo Switch, and Steam, and we have welcomed a lot of new players. This is a good opportunity to go ahead with our first issue and take some time to reflect on all the amazing things we have been up to since Open Beta.

In this mini magazine, you will be able to enjoy all sorts of topics revolving around our Palian community, like fanart, stories from players, and fun facts. There will also be exciting extras like puzzles, a sparkly Lunascope and more.

This magazine is supported by Singularity 6 as an official Shepp Project (you can read more about Shepp projects on page 28). It is fanmade, brought to life through the help of other Shepps, Community Managers, and you!

With this project, I wanted to create something where we all could feel connected by seeing each other's contributions to the community. A place we can find common ground, and share our love for Palia.

I also wanted to make it easier for you to stay up to date on what is happening around our neighborhood. In busy times, or times you are not able to be present in chats or in-game, I still want you to feel included with a small overview of what has been happening recently. I hope it will offer you a fun read and serve as a highlight in your Palian lives.

We aim to have this be a recurring magazine, so stay tuned! Put on your Chapaajama, fetch some celebration cake, and enjoy!

~ The editor



In-game stories



Let's take a look at some of our memorable moments since Open Beta.

Beta launch

On August 10th the gates were finally opened to welcome everyone into the world of Palia!

Prior to this, the excitement to be able to start our journeys was shown by the sheer amount of players asking perhaps the most-asked questions of all time:

"When is open beta?" "Open Beta when?"

As we went into Beta, a few of the most asked questions were:

"How do I see my friends?" "-?"

"Where is Kenli's Sandwich?!"



A new player being welcomed into the world by fellow humans!



Players hoarding Chapaas. Adorable! (By: Whirl)



Buying delicious treats at the market

Maji Market

Named after Maji, the dragon god of the Majiri, this celebratory night market is filled with fireworks, good food, and plushies. Oh! Did I mention the CHAPAA CHASE?

Loved by some, feared by others - there is no denying the amount of laughter and tears this event brought upon us. I imagine we are all still humming the beautifully-orchestrated music in our heads. No? Well, now you are.



Why did Zeki always insist on talking to us in the middle of the Chapaa Chase?



Cake parties

One of the most profitable ways we earned gold: making cakes! A ton of cakes. Think you made enough? Think again! Communities came together, and parties were hosted so that one could make the most out of this profitable delicacy. Not everyone was fond of the cake cartel, and cake baking was nerfed in the end. But that shouldn't stop you from making them or any other delicious sweet treats you prefer!



Frosting duty!



The Community, ChaCha Coffee Club, ready to prepare their next batch of cakes (By: Sukina)

Community spirit



Flare for Flow trees (By: Tiros)

If you've ever been out on a Flow tree run, you have probably experienced the kindness of the community. Players have been really helpful by calling out trees in the chat or sending up flares to help others locate them. This doesn't mean you have to share your findings, but we sure appreciate it when you do!



Chopping together!



Two friends fishing

Playing together provides several benefits when doing skills like foraging, cooking, and mining. Did you know that if you fish next to someone, you both will start a fishing buff for hook time? It's perfect if you are in a hurry to get that rare fish!



Pumpkin update

Pumpkins, pumpkins, pumpkins!
Seasonal decor and scary vibes, we love it!

Many players took this opportunity to have some fun with the spooky gourds and floating candles.



The Shimmerflies Squad did a costume party and Halloween house tours. Look at them matching!
(By: Overflow Plays)



By: Livwel

By: Zen Pendulum

These spooky lanterns were conjured by creative players!



By: Trintzuu

Let's hear from OnceWorried, a player who hosted a great pumpkin hunt for the community:

"After weeks of resource gathering, furniture crafting, and cake partying (so I could afford the pumpkins!), the Pumpkin Hunt was ready. I've run 3 hunts of around 6-8 players each, all hunting between 160 and 200 pumpkins (I hide more between each hunt - it's a work in progress!) Players ran all around my plot and into the jam-packed house picking up one pumpkin at a time and running them out to their home bases to be counted.

1st, 2nd, and 3rd place hunters received in-game prizes through the request system, ranging from copper bars to gold bars/honey lures. The hunt takes between 40 minutes to an hour depending on how skilled the hunters are. Everyone has loved the hunt - it's especially fun to play together in VC! We've made some new friends along the way and found a fun new way to play inside Palia."



Searching for pumpkins!

Arcade pumpkins

Homebases (By: OnceWorried)

Winterlights

As we were heading into winter, we were able to learn about how the Majiri and Grimalkins celebrate the convergence of light:

"Winterlights is a celebration where we light candles with those we care about to symbolize hope for a new spring during the darkest time of the year. Throughout the years, it transformed into a fun tradition where we eat food and share stories with the ones we love."

- Jina



One thing we love most about Palia is decorating. Players shared so many beautiful screenshots of their festive homes!



We also learned more about Ancient Human traditions, and were able to do things like decorate our trees and hang stockings by the fireplace. COZY!



Arenvanya welcomed us to warm up by the fireplace and look at her decorations.

Speaking of decorations, certain naughty creatures took this celebration as an opportunity to steal and hide seasonal items in their nests! Naturally, we had to run around in search of these goodies. To our disappointment, we were often rewarded with sticks and stones instead. Why? Had we not been nice all year and deserving of better, S6? Just how big were these nests that they could fit huge rugs in them, anyway?



ALSO, SNOWBALL FIGHTS!!

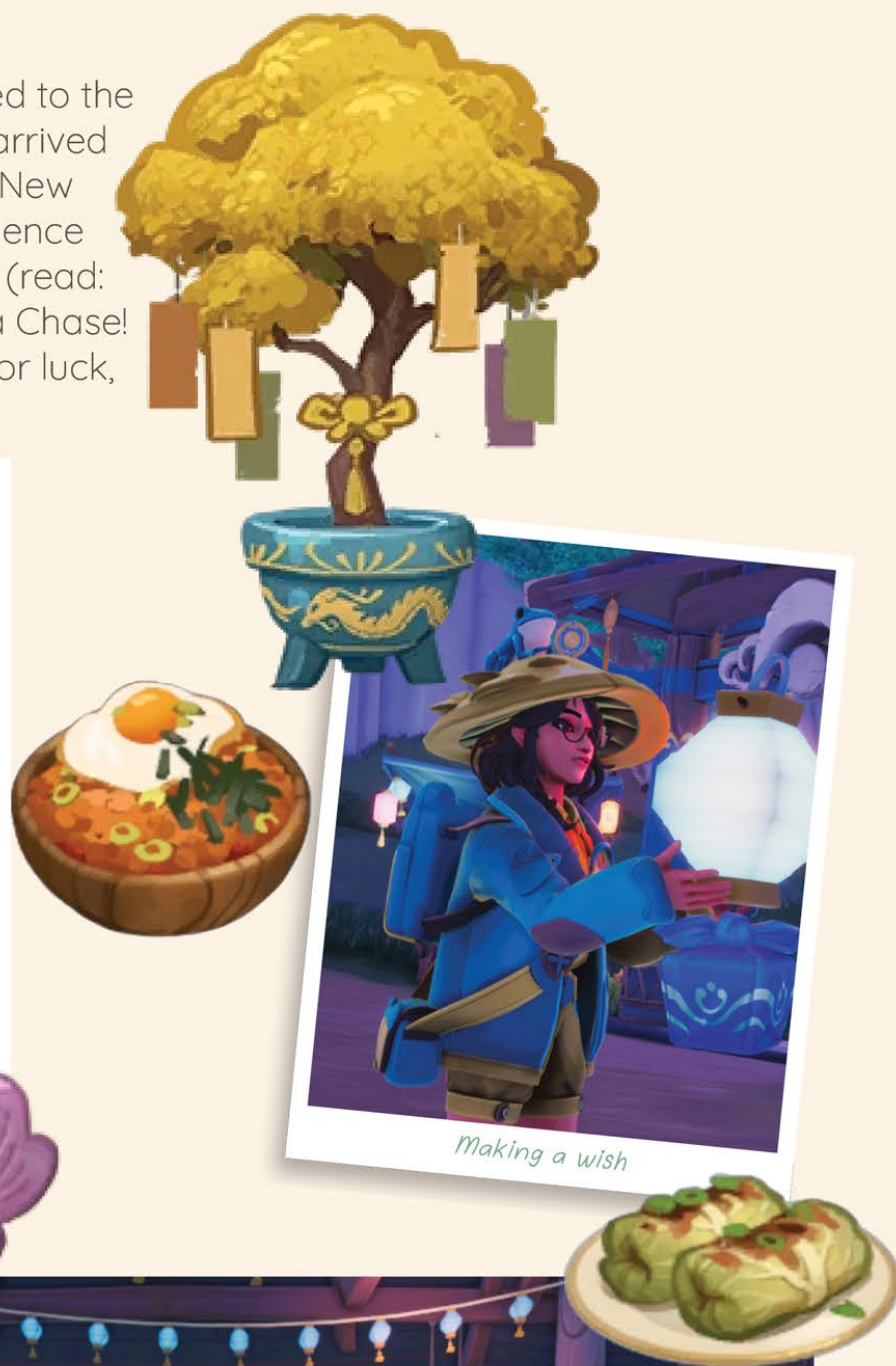


Luna New Year Celebration

When the Maji Market returned to the Kilima Village Fairgrounds, it arrived with celebrations of the Luna New Year. The festivity let us experience new foods, Zeki's Prize Wheel (read: scam), and revisit the Chapaa Chase! We also hung Wish Ribbons for luck, prosperity, and longevity.



Someone got lucky!

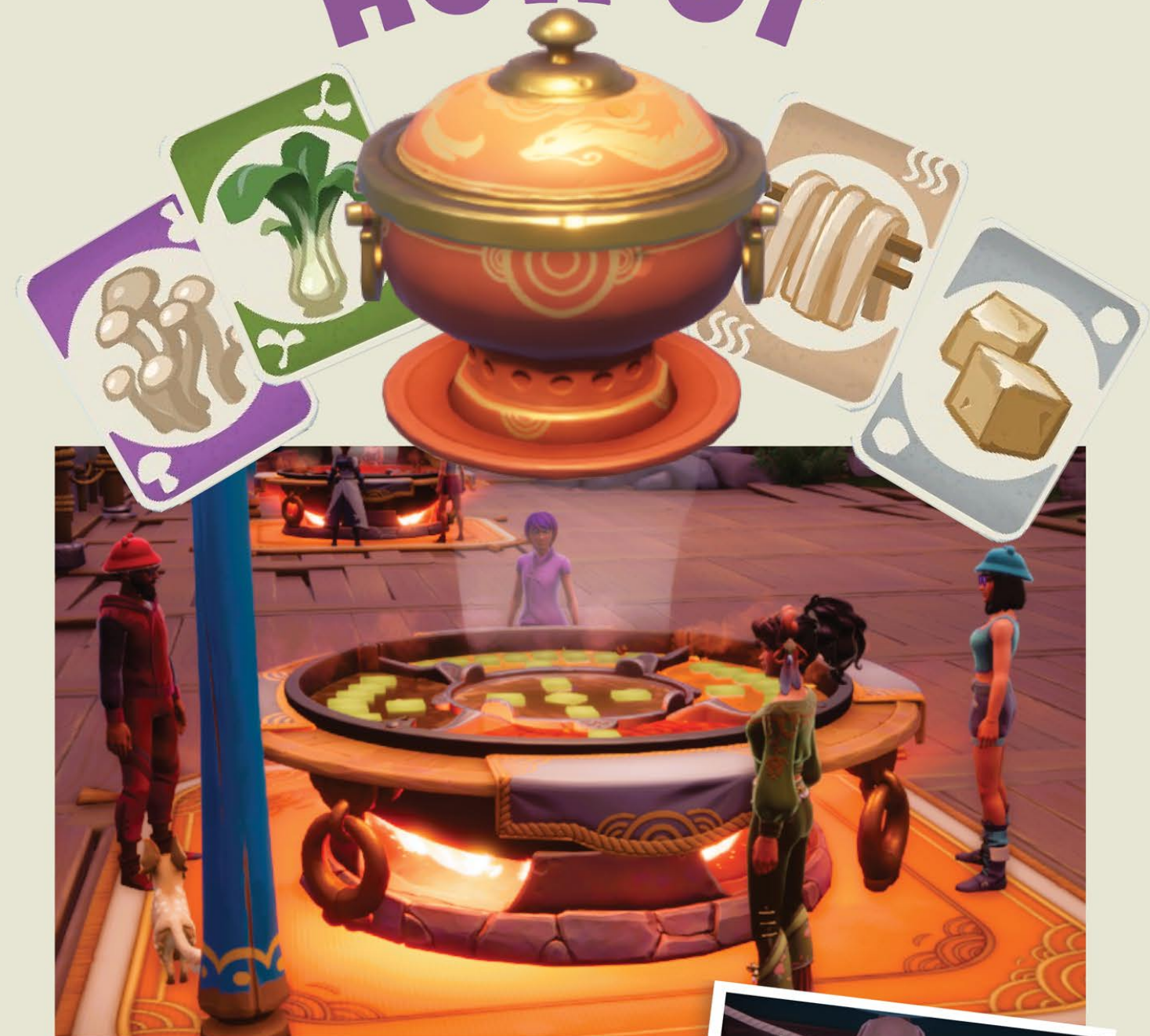


Making a wish



The SleepyPals Community had fun at the market! (By: rmb_eternal)

HOTPOT



The SleepyPals Community playing Hotpot (By: rmb_eternal)

Salty, tangy, umami and spicy. No matter the preference, we really enjoyed the addition of the Hotpot minigame! We used our favorite ingredients to make some good soup with our Palian friends. This minigame was so popular that players requested to have a hotpot at their home plots. Please, S6?



Decorative hotpots

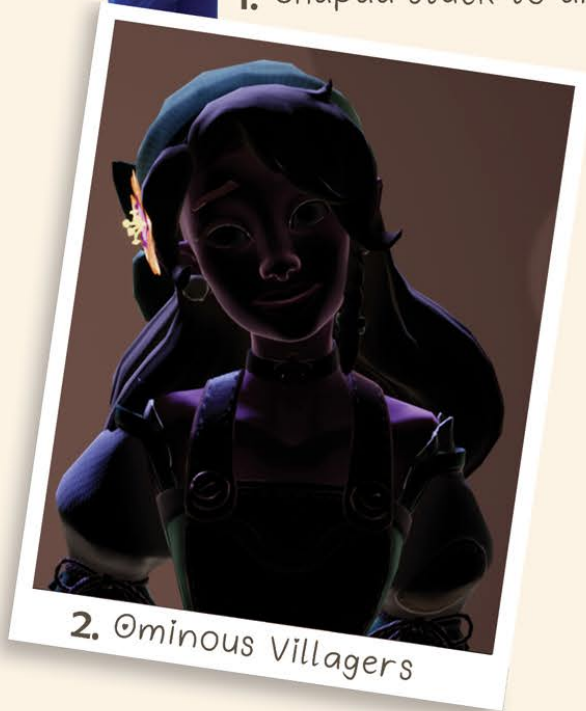
Top 3

There are a lot of things in Palia that excite us. Some things make us feel fuzzy and warm like a Chapaa sleeping soundly on a rug in front of the fireplace. Some things make us want to beet the fertilizer out of the worm farm. Lettuce look at some of the things we have been the most passionate about!

What bugs made us laugh?



1. Chapaa stuck to arms



2. @ominous Villagers

3. T-pose



The food we prepped the most:

1. 
2. 
3. 

Do we need to say more? Many friends and strangers put their hands together to bake the most delicious and profitable cakes.

What made us feel most desperate?

1. The amount of time spent fishing for the sushi recipe. Did it even exist?



2. Proudhorn Sernuks stuck inside the landscape.



3. Accidentally engaging in a conversation with Villagers during the Chapaa Chase.



Our most-beloved Villagers.

1. Ashura. The most wholesome man we all want to confide in.



2. Reth. Good soup. Have you seen his secret soup recipe yet?



3. Einar. Come on, how cute is he?

What skills did we spend the most time on?



1. Mining. We couldn't get enough of Palium... Furniture Making is expensive! Then along came the Starstones. Palia? More like Mining Simulator.

2. Fishing. We all want that Ancient Fish!



3. Foraging. Deforestation runs for Flow wood. Seems like we love to make furniture!

Hot topics in the Discord chats!

1. Why could we not sit, if sitting shaped? The community asked, and the devs delivered!



2. Flow tree etiquette! Do you call out your findings, or not?

3. Is an MMO or is not an MMO? That is the question.



What are **your top 3** picks? Feel free to share and discuss them in the Official Palia Discord with **#top3!**

Creative Corner



The community is filled with creative individuals! If you haven't yet, we highly recommend you to check out all the amazing arts and crafts on Discord and other social media. There are painters, builders, crafters, cosplayers, chefs, and more. The art style in Palia is something that attracts a lot of players to the game, and we are in awe of the talent of the Singularity 6 artists - so much so that we feel inspired to create something of our own! Even though we would love to show off more, we feel honored to at least be able to display some of your creations. Enjoy!



Handcrafts

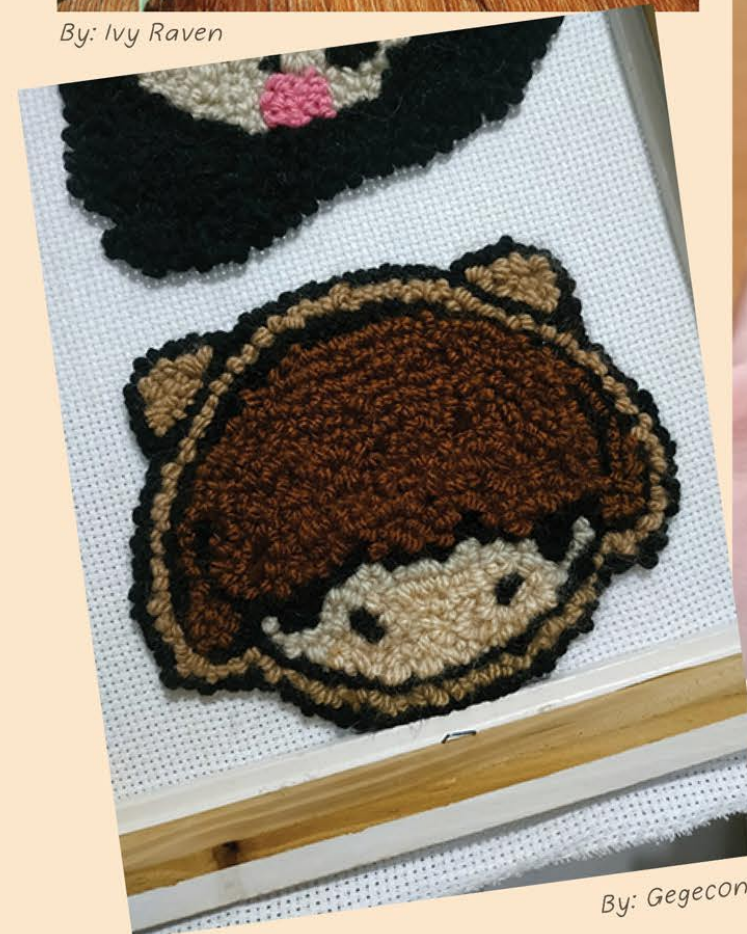
There are no limits here. Whether you are a beginner or a master, you can make your favorite things from Palia with the help of your choice materials. Take a look at these cuties:



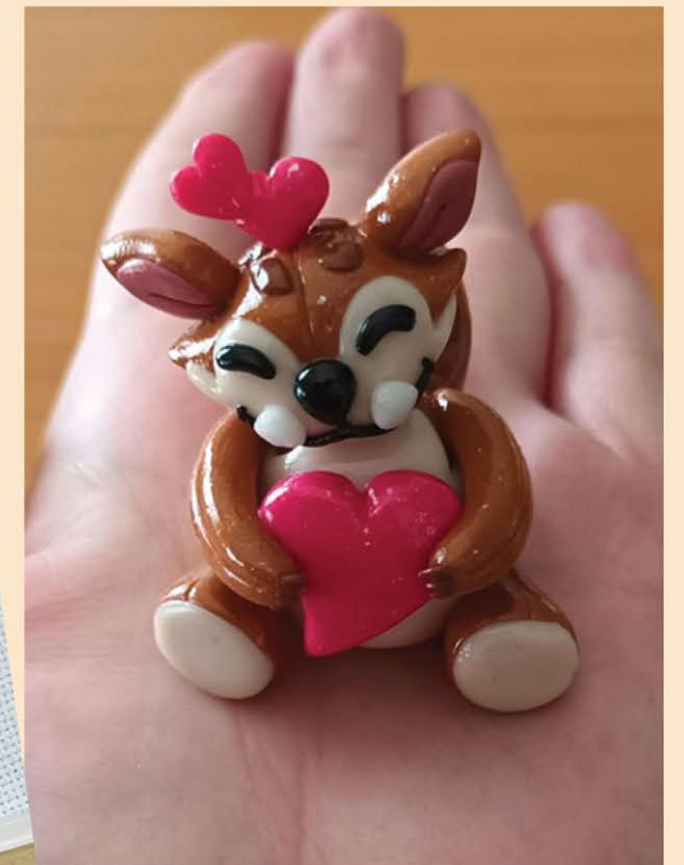
By: Ivy Raven



By: Mazie Bones



By: Gegeconge



By: Ninni Cali

Creative builds

Building and decorating is a big feature in Palia. Some players have taken this to the next level. There are no limits to what you can make if you let your creativity flow.

Players frequently make mazes, towers, obstacle courses, and artwork. Some even host events for these creations, so why not sign up for one? Here are a couple of examples of creative builds:



Look at this aMAZEing build with 1200 wardrobes (By: Skibi Green)



199 industrial nightstands (By: illadelph267)

Cosplay

We love seeing our favorite characters brought to life by talented cosplayers. Do you have a favorite villager you want to cosplay as?



Jina by: PeetasPants



Tish by: Tenaary



Delaila by: Sindradottir



Tau by: Ellizabethx



Food

Palia has many yummy recipes and food for sale. You can cook anything, from sweet treats like Macarons or Apple Pie, to savory dishes like Kimchi Fried Rice or Loaded Potato Soup.

It's pretty cool seeing our favorite recipes (and inspired ones) being cooked up in real life. We hope this will nudge you into equipping your apron, too!



Celebration Cake by: Lu



@rmu popsicle by: Finchin



Bahari Bay Breeze drinks, complete with palium and Long-nosed Unicorn Fish!
By: Lady Jayne and Scarlette Demoness

Fanart

There is something magical about seeing the players' expressions and artistic interpretations of the world of Palia. Whether it's characters, comics, or scenery, the community has you covered!

We are lucky to see a ton of beautiful artwork being born out of passion for the game. We hope you won't hesitate to show off your own artwork - it brings so much joy to others, as well! After all, Sharing is caring~



Original character by: Pettyandpetulant



Reth by: Sushibeth



Stargazing by: Quiet daisy



Lunascopes

In Palian astrology, each person is born with a Star Path. This Star Path is derived from a combination of your Luna Moon sign and the season you were born in. Each sign also has a Starstone associated with it to remind a person of their sign. It is believed that people under the different star paths exhibit certain traits, although they are in no way definitive.

Once you find your special sign (for example: Air Artist), you can use that knowledge to form a better understanding of yourself.

This fanmade Lunascope is based solely on your Luna Moon sign. To find which reading is meant for you, you can either search up what Luna moon phase you were born under, or you can choose the Luna Moon sign traits that speaks the most to you.

Luna Moon sign traits

The Watcher

Larger than life, destined for greatness, sometimes viewed as cursed, may die a tragic death

The Scholar

Introspective, impartial, obsessive, unemotional or cold

The Wanderer

Carefree, fun, mercurial, unreliable

The Farmer

Patient, kind, hardworking, not a deep thinker

The Merchant

Intelligent, ambitious, calculating, self-interested

The Aristocrat

Diplomatic, charming, indulgent, judgmental

The Hunter

Always searching for something, honest, loyal, often dissatisfied

The Builder

Family-oriented, respectful, dutiful, plain

The General

Good leaders, strong-willed, aggressive, stubborn

The Artist

Creative, speaks up for their beliefs, dramatic, emotional to a fault

Seasons

Spring | Water

Thoughtful, calm, analytical, anxious

Summer | Fire

Optimistic, enthusiastic, active, impulsive

Fall | Air

Relaxed, observant, playful, humorous

Winter | Earth

Confident, practical, patient, blunt



The Watcher

Onyx ☾ Moon-on-Moon Eclipse

Sometimes RNG just isn't on your side; today is one of those times. Set your glow worms aside for the day, and focus on your garden instead.

The Scholar

Aquamarine ☾ Luna/Sun eclipse

It's okay to put yourself first, too! You will find yourself in need of some help soon... Let other players be there for you, and don't hesitate to use the Request system.

The Wanderer

Citrine ☾ New Moon

Try to add more exercise to your daily routine. Skip the stables and make that run to Bahari! You might come across some resources you didn't expect.

The Farmer

Jasper ☾ Waxing Crescent

There is no time like the present to get started on your future! Make a new crop-planting plan today.

The Merchant

Ruby ☾ First quarter

Your min-maxing is taking its toll. Take a break from your current path; you might find that different roads can lead you to your goal. Your future self will thank you for it.

The Aristocrat

Amethyst ☾ Waxing Gibbous

Don't worry if you make a mistake in character customization. Your beauty will also shine from within. This is a good time to help a stranger - send a flare if you see something rare.

The Hunter

Emerald ☾ Full Moon

Never be afraid to ask questions. Your curiosity may have gotten you in trouble before, but it's about to pay off! Some information soon shared with you will change up the routine.

The Builder

Quartz ☾ Waning Gibbous

A mellow friend has some advice - their influence in your life is good, so listen... as long as it isn't about lettuce soup.

The General

Garnet ☾ Last Quarter

This week, you will make many friends, and people will follow your guidance. Together, you will collect many Starstones. When you think about giving up, hit that last node - you will be rewarded.

The Artist

Sapphire ☾ Waning Crescent

Don't be afraid to show off your decoration skills. Now is the time to challenge yourself with new themes and express your inner emotions. Your house will become the sanctuary you are looking for.

MYSTERIOUS GREEN CYLINDERS?!



I have made a shocking discovery and am in need of help. If my theory is correct, then these cylinders could imply impending doom if we don't act quickly! They can be found all over the beaches in Bahari Bay. Bring me one of these so that we can conduct further research.

Elouisa

Bring this coupon to receive

ONE ITEM
At full price

with purchase of any seeds



Zeki

MODEL REQUESTED!!

After being struck by a flash of inspiration, I feverishly toiled away, creating several new garments. Now I need to see how they fit on the living form! Come to my store and help breathe new life into these heaps of fabric and silk!

Regards from Jel

!LOST SANDWICH!

Will give praise for any information on its whereabouts. Half the sandwich will be granted to you upon its return!

Mayor Kenli

Ancient Fish?

I have been practicing in the act of advertising and must say I am getting more and more intrigued by this human construct. I am searching for an exceedingly elusive Ancient Fish and require aid. Let us pursue our Oneness and engage in the act of luring this fish together. Meet me at the Fisherman's Lagoon.

Einar

TRACKER WANTED

Despite my excellent tracking skills, it would appear to be difficult finding any Muujin. I require a professional tracker to help me find them, but as I am the best when it comes to hunting, I will take care of the sharpshooting. Payment will be based on effort and results.

Hassian

SIFUU REPAIR



YOU BREAK IT,
I FIX IT!

A reminder from the library

please return books as you found them - meaning **WITHOUT** soup stains, torn pages, or little doodles in the margins.



Don't let your spuds become duds!!

Daiya Family Farm has the best deals on produce, fertilizer, and seeds.

We won't be **BETT!**

Come on down and **LETTUCE** help get your garden growing today!!

Community projects

Community engagement

In the Palian community, there are many bright individuals that are eager to help others. I think we can all agree it feels meaningful to offer help and invest your time in something that you are passionate about. For the one receiving help, it might mean more than you think. Sometimes, all it takes is a single kind gesture to make someone feel more at home in the community.

If you ever struggle finding the daily rummage pile or are stuck on a quest, you can be sure to find help from other players. There are also player-made guides and planners existing for just about anything you can think of. Need a better garden setup? Or do you want to plan out your house in advance? Perhaps you are in desperate need to plan a cake party for 1500 cakes? Don't worry, the community has got your back!

Another way of helping and having fun together is to host events. We see so many creative ways of enjoying the game with others, like cooking parties, house decorating challenges, deforestation runs, and fishing competitions. If you want to host an event yourself, or are looking to join one, you can take a look in the LFG forum in the Official Discord.

Our community is also super invested when it comes to feedback. Several important topics have been brought up by players, like gameplay issues and accessibility, as well as hopes and wishes for future additions to the game. If you have feedback you want to share directly with Singularity 6, there is an official feedback form you can use (palia.info/feedback).



Thank you for going above and beyond to help! Your efforts play a crucial part in making the community so awesome!

The wiki

Did you know Palia has its very own Wiki? If you ever feel stuck on a quest or are in need of some information, you can search up answers in no time. The wiki is made and kept up-to-date with the help of many volunteers. It has also been actively translated for more accessibility on an international level.

Let's hear a little more about this project from Altica, who is one of the wiki admins:

What motivates you to help out with creating the Wiki?

"I help with the wiki because I want to have an effect on the world, and this is my way of improving the user experience. I'm also just a workaholic, but I've had a blast working with everyone on the wiki, and look forward to many more adventures to come."

Are there any specific Wiki pages that currently require most help?

"Currently the wiki is in need of translators, and I would love some skilled writers to come through and write biographies for the Villagers."

If a player wants to contribute, how do they start out?

"There are plenty of ways the wiki can be expanded and improved upon, and every editor brings their own flair to every change. Most editors start out by noticing something is wrong, missing, or outdated. Some fix it themselves, while others report it to us on the Discord. Both are very helpful and we appreciate every contribution."



Did you know you can help other players build their home by contributing materials?

Shepp projects

You might have heard about Shepps within the world of Palia. These are guides and mentors that help new villagers understand the customs and traditions of the new village they wish to become a part of. Did you know that there are also players that are Shepps? Shepps are players that have been given a “Badge of Honor” for their dedication to Palia and Palia’s community, both in and out of the game. They align closely with the Community team of Singularity 6 as mentors, guides, and trusted game experts. Here is a quote from the Official Palia Website:

“We consider ourselves incredibly fortunate to have such a wonderful community, and quickly started daydreaming of ways to promote even more player involvement.”

“We’ve already seen the amazing things you can do - from Fanart roundups to ‘Wikibot’ knowledge powerhouses - and we wanted to celebrate that, and build a foundation for you all to grow even more. And thus, the Shepp program was born.”

Now that you know a little more about The Shepp Program, let’s talk about Shepp projects! To put it simply, every Shepp has their own unique skills or interests, and can use those to create something for the community. This magazine is an example of such a project, as well as Shepp Arenvanya’s famous gardening guide and Shepp Whirl’s Extra Life streams for Charity.

Next is a closer look at one of the projects: Deco Demo Races, as we hope this will inspire you to try it out for yourself! Let’s hear from Shepp Sinity, who created and hosted this project:

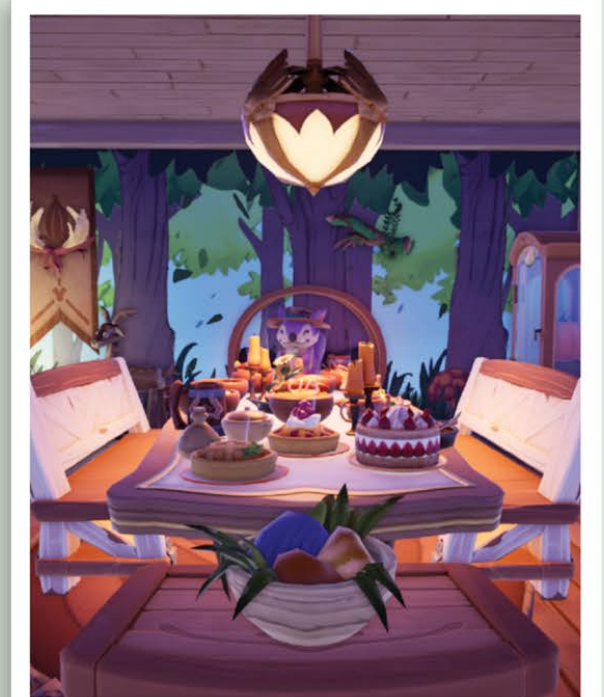
“Deco Demos are where three teams will meet at a “host’s” house in Palia. There you will see a house set up with three equal sized rooms and all the furniture out in the yard and on the outside of the building. In the Gazebo is where it all starts! The teams will meet there next to the table color coded for their team (dressing in your team’s color is encouraged). Each team will party up so they can communicate better. The host will be giving the “assignment” for decoration which can be a theme or a requirement to include certain items once all are gathered. Teams get a 5 minute planning period and then 30 minutes to decorate!”

The debut of Deco Demos had two sessions to help support the Palian Fan Team with content and incentives for ExtraLife Charities that several streamers were participating in. Through the incentives, collectively we earned \$276 across several streams for Children’s Miracle Network.”

The theme of this event was “Friend’s Giving”. Here are some of the results!



Team Blue



Team Purple



Team Green



A pack of wild Shepps



Get to know the CMs

Over the course of time, we have gotten to know our Community Managers as kind, passionate, and invested in the players. Some have since moved on, but they have all been an important part in making the community feel warm and inclusive. We are curious to get to know more about their Palian lives, and so we decided to create a Q&A! With us, we have the renowned Melbelle (Who is no longer our CM, but we love her still!) and Asherelle, who also have enjoyed playing Palia.

STARTING OFF WITH THE BASICS:

Who is your Shepp?

Melbelle: Ashura! He's got such Santa energy, it makes me adore him.

Asherelle: In Live, I currently don't have one. But historically (in past playtests), it's been Ashura.

If you could add any new Profession to the game, what would it be?

Melbelle: Probably animal husbandry, or diving for oysters hehe.

Asherelle: It would be animal husbandry, of course, haha. Fun fact, my dad's side of the family are actually farmers in the rural countryside.

Muujin or Chapaa?

Melbelle: MUUJIN i love their faces.

Asherelle: Chapaa

Do you have a favorite design in the game. For example a character, creature or area?

Melbelle: Temple of the Gales is probably my favorite design of an area in our game. It reminds me of the Mario Sunshine level where you have to stand on the sand bird, and I love it.

Asherelle: I really like Jel's character design.

Temple of the Waves, Flames, Gales or Roots?

Melbelle: Waves for Reasons.

Asherelle: The Roots is my favorite because it is so beautiful to be in.

What would be your dream furniture set that you would like to see in Palia?

Melbelle: Mermaid or something with magic glowy circles.

Asherelle: I'm not great at decorating so I think the existing furniture sets we have is more than enough for me, haha. My favorite is actually the Mid Century Modern set

Which furniture set would you love to have in your real life home?

Melbelle: I think the harvest set, but specifically in Tish's house's colorway!

Asherelle: The Bellflower set, because if I can afford that, it means I'm rich.

Favorite tune from Palia?

Melbelle: I love Kilima at night, especially in Ormuu's Horn Inn.

Asherelle: It's still the Kilima Village theme, especially during the sunset period.

Did you finish climbing the tower?

Melbelle: No. *pain*.

Asherelle: No... I'm horrible with platformers in every game and this is no exception haha.

Reth's secret soup recipe. Can you share one of the ingredients used?

Melbelle: Probably lettuce if I had to guess.

Asherelle: Groove.

Which plushie is your favorite from in-game?

Melbelle: I'm a bit biased and love the palcat plushies, but I'm also very Team Bee.

Asherelle: My favorite is one that has not been added yet. Okay, to be more fair, it would be Frogbert, of course!

AND NOW INTRODUCING SOME SCENARIOS:

You are sitting by the fireplace in Ormuu's Horn Inn, which villager would you want to join you for a drink?

Melbelle: Zeki, or Reth or both - I think they can hang.

Asherelle: I would love to be with as many villagers as possible. I think it's the kind of atmosphere where the best memories are with a big, fun crowd!

You are having a picnic at your favorite spot in Palia, where would it be?

Melbelle: This is a tough one! I think it would probably be by the Flooded Fortress.

Asherelle: The gazebo past Jel's.

You can only eat one savory and one sweet dish from Palia for a month, which ones would it be?

Melbelle: Sushi and Celebration cake.

Asherelle: Savory - Loaded Potato Soup, Sweet - Reth's Ice Cream Mochi.

You and a villager swap houses! Whose house do you end up in?

Melbelle: Tamala's - My house already looks like hers so it won't be that much of an adjustment.

Asherelle: Tamala's!

Eshe is holding an audition for an ancient human play: "The Phantom of the Theatre". Who lands the role as The Phantom, and who lands the role as the main protagonist(s)?

Melbelle: Jel is clearly Christine Daae, Hodari was cast as the Phantom (over Nai'o) and can't act, and Reth is Raoul. Honorable mention to Tish who does her best Meg. Kenyatta is the stage manager, but she keeps missing cues to chat.



Asherelle: *The Phantom - Kenyatta because Eshe is not above using this to elevate her daughter lol (I think Kenyatta would actually love the chance to act out secretly, but says otherwise, and gets roped into it anyway and puts 200% effort.)*

LET'S DIVE A LITTLE DEEPER:

Which villager do you relate most to?

Melbelle: *I think I relate most to Hekla or Tish. Hekla has the mom-energy and loneliness that I can deeply relate to, Tish is an eccentric creative with an overprotective brother.*

Asherelle: *This is tough. My answer will change depending on when you ask me, haha, but right now it is Tish.*

Do you have a favorite memory in Palia?

Melbelle: *I've had a couple big cooking parties with friends that are always super fun. I also just love the day-to-day of waving to other players, calling out flow trees, and shooting Sernuk together.*

Asherelle: *My very first time seeing and hunting a proudhorn. It made me realize the potential of what Palia could offer.*

What frustrates you the most when you play the game?

Melbelle: *Probably that I run out of materials so quickly, and I don't have much time to play.*

Asherelle: *I usually play Palia to relax so it's in 30 minute sessions. I don't think I play enough to run into anything particularly frustrating, haha. I think it also helps that I have internal insight into any bug, knowing what is going to be fixed and what isn't...*

What's has been the best part about being a CM?

Melbelle: *I really love our community, and being able to 1:1 with so many people, and our creator Partners! Also the fact that I get NDA content hehehehehe.*

Asherelle: *Hearing people's stories of how Palia helped improve their lives, and knowing what I'm doing is a part of that.*

Lastly, what in Palia makes you feel most at home?

Melbelle: *A very small detail - When the sun comes up in Palia, and the "roosters" chirp, and all the lights turn off, and villagers start leaving their homes.. Reminds me a lot of small town life and it's incredibly relaxing to me.*

Asherelle: *The game wouldn't be what it is without the people playing it. Playing and seeing other folks enjoy the game makes me happy.*



Puzzles

WORD SEARCH

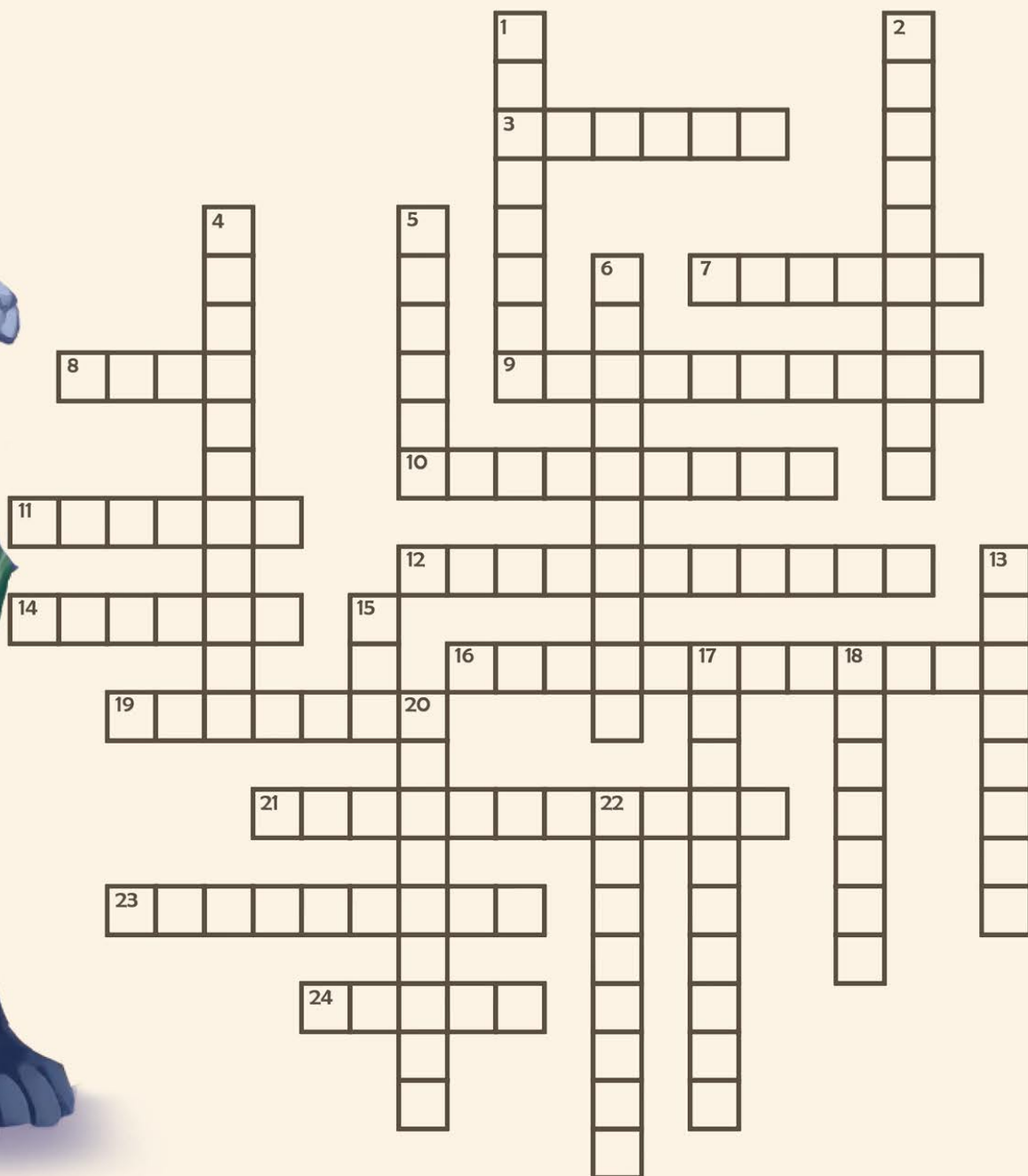
𐄂 𐄃 𐄄 𐄅 𐄆 𐄇 𐄈 𐄉 𐄊 𐄋 𐄌 𐄍 𐄎 𐄏 𐄐 𐄑 𐄒 𐄓 𐄔 𐄕 𐄖 𐄗 𐄘 𐄙 𐄚 𐄛 𐄜 𐄝
 𐄞 𐄟 𐄠 𐄡 𐄢 𐄣 𐄤 𐄥 𐄦 𐄧 𐄨 𐄩 𐄪 𐄫 𐄬 𐄭 𐄮 𐄯 𐄰 𐄱 𐄲 𐄳 𐄴 𐄵 𐄶 𐄷 𐄸 𐄹 𐄺
 𐄻 𐄼 𐄽 𐄾 𐄿 𐅀 𐅁 𐅂 𐅃 𐅄 𐅅 𐅆 𐅇 𐅈 𐅉 𐅊 𐅋 𐅌 𐅍 𐅎 𐅏 𐅐 𐅑 𐅒 𐅓 𐅔 𐅕 𐅖 𐅗 𐅘 𐅙 𐅚 𐅛 𐅜 𐅝
 𐅞 𐅟 𐅠 𐅡 𐅢 𐅣 𐅤 𐅥 𐅦 𐅧 𐅨 𐅩 𐅪 𐅫 𐅬 𐅭 𐅮 𐅯 𐅰 𐅱 𐅲 𐅳 𐅴 𐅵 𐅶 𐅷 𐅸 𐅹 𐅺 𐅻 𐅼 𐅽 𐅾 𐅿
 𐆀 𐆁 𐆂 𐆃 𐆄 𐆅 𐆆 𐆇 𐆈 𐆉 𐆊 𐆋 𐆌 𐆍 𐆎 𐆏 𐆐 𐆑 𐆒 𐆓 𐆔 𐆕 𐆖 𐆗 𐆘 𐆙 𐆚 𐆛 𐆜 𐆝
 𐆞 𐆟 𐆠 𐆡 𐆢 𐆣 𐆤 𐆥 𐆦 𐆧 𐆨 𐆩 𐆪 𐆫 𐆬 𐆭 𐆮 𐆯 𐆰 𐆱 𐆲 𐆳 𐆴 𐆵 𐆶 𐆷 𐆸 𐆹 𐆺 𐆻 𐆼 𐆽 𐆾 𐆿
 𐇀 𐇁 𐇂 𐇃 𐇄 𐇅 𐇆 𐇇 𐇈 𐇉 𐇊 𐇋 𐇌 𐇍 𐇎 𐇏 𐇐 𐇑 𐇒 𐇓 𐇔 𐇕 𐇖 𐇗 𐇘 𐇙 𐇚 𐇛 𐇜 𐇝 𐇞 𐇟 𐇠 𐇡 𐇢 𐇣 𐇤 𐇥 𐇦 𐇧 𐇨 𐇩 𐇪 𐇫 𐇬 𐇭 𐇮 𐇯 𐇰 𐇱 𐇲 𐇳 𐇴 𐇵 𐇶 𐇷 𐇸 𐇹 𐇺 𐇻 𐇼 𐇽 𐇾 𐇿
 𐈀 𐈁 𐈂 𐈃 𐈄 𐈅 𐈆 𐈇 𐈈 𐈉 𐈊 𐈋 𐈌 𐈍 𐈎 𐈏 𐈐 𐈑 𐈒 𐈓 𐈔 𐈕 𐈖 𐈗 𐈘 𐈙 𐈚 𐈛 𐈜 𐈝 𐈞 𐈟 𐈠 𐈡 𐈢 𐈣 𐈤 𐈥 𐈦 𐈧 𐈨 𐈩 𐈪 𐈫 𐈬 𐈭 𐈮 𐈯 𐈰 𐈱 𐈲 𐈳 𐈴 𐈵 𐈶 𐈷 𐈸 𐈹 𐈺 𐈻 𐈼 𐈽 𐈾 𐈿
 𐉀 𐉁 𐉂 𐉃 𐉄 𐉅 𐉆 𐉇 𐉈 𐉉 𐉊 𐉋 𐉌 𐉍 𐉎 𐉏 𐉐 𐉑 𐉒 𐉓 𐉔 𐉕 𐉖 𐉗 𐉘 𐉙 𐉚 𐉛 𐉜 𐉝 𐉞 𐉟 𐉠 𐉡 𐉢 𐉣 𐉤 𐉥 𐉦 𐉧 𐉨 𐉩 𐉪 𐉫 𐉬 𐉭 𐉮 𐉯 𐉰 𐉱 𐉲 𐉳 𐉴 𐉵 𐉶 𐉷 𐉸 𐉹 𐉺 𐉻 𐉼 𐉽 𐉾 𐉿

Did you know the Majiri have their own alphabet?
 Test your translating skills by finding the following words in Majiri in the puzzle. If you struggle, there are dedicated linguists that can assist you in the lore forums on Discord.
 Words are hidden → ↓ and ↘



- APPLE
- BAHARI
- PLUSHIE
- EINAR
- FLOW TREE
- GILLYFIN
- KILIMA
- LUCKY COIN
- MAJIRI
- MUUJIN
- PALCAT
- PALIUM
- STAR RUBY
- TAU
- WORM FARM





ACROSS:

- 3. Tusks big and white, careful or it might bite.
- 7. Gift you get during the Acceptance Ceremony.
- 8. Instrument Badruu plays.
- 9. A type of bird.
- 10. This furniture set can be fished up from chests.
- 11. Always hit her target, until she didn't.
- 12. Ashura's wife loved these flowers.
- 14. A rare being.
- 16. Einar's favorite things.
- 19. A princess found in Kilima only.
- 21. A difficult to find fish.
- 23. Nai'o wanted to make a team for this sport called "Kilima Kitsuus".
- 24. Largest city in the Palian Republic.

DOWN:

- 1. Sugar, Sweet leaf, milk and egg.
- 2. Gems you can find when you mine.
- 4. Name for Zeki's store.
- 5. Precious ore.
- 6. Place accessible through a tiny tear between our realm and the Dragon's realm.
- 13. Hodari struggles with this.
- 15. The bestest boy.
- 17. Pirate who talks about his life and crew via hidden messages.
- 18. Item used to open doorways to temples.
- 20. Term for space aliens like Zeki.
- 22. Hippity hoppity, our favorite froggy.

Can you spot the nine differences?



There's never a dill moment in Badruu's garden. Someone scattered his crops! Who? Beets me. In any case, lettuce help sort his produce!

Garden-oku (Sudoku) is played on a grid of 9 x 9 spaces. Within the rows and columns are 9 "squares" (made up of 3 x 3 spaces). Each row, column, and square (9 spaces each) needs to be filled out with the available crops, without repeating any crops within the row, column or square.



Can you find these six locations in Kilima Village?



Credits

A MASSIVE thanks to everyone who has contributed to making this mini magazine!



Najuma with blueberry pie by: Kwatermelon

Editor and Designer: Sukina
Lunscope: Sinity, Tanpando, Tiros, Sukina
Villager ads: TanPando, Tiros, Evanfardreamer, Sukina
Puzzles: Tiros, Rio (maze illustrations), Arenvanya, Aisen Crown (Garden-oku design), Xrystal
Proofreaders: Rio, Vexy, Evanfardreamer
Wiki publishing: TheElm, Altica



This magazine is a nonprofit fan project and **for personal use only.**

The intellectual property "Palia" is a creative work of Singularity 6. The derivative works, including but not limited to The Prancing Sernuk, artwork & imagery in The Prancing Sernuk, and texts in The Prancing Sernuk, belong to their respective creators.

This magazine and its content is not to be redistributed, sold or copied.